

## RULES & REQUIREMENTS

- Coaching Certification
  - Coaching Clinics
  - Rules & Requirements
  - Continuing Education
  - Age-Specific Modules
  - Goaltending Symposium
  - Level 5 Symposium
  - More
- Student Coaches

- Registration
- Requirements

### Coaching Education Program Requirements

#### (1) Required Coaching Education Program Levels for Ice Hockey

All coaches must have the required certification level by January 1 of the current season.

**(a)** All coaches must enter USA Hockey's Coaching Education Program at the 6U/8U clinic if coaching Learn To Skate, Learn To Play, and/or 6U/8U classifications or a classification and above.

Coaches at the 6U/8U Level do not need to progress any further until one of the following occurs:

- i. The coach moves up to another age classification above 8U, or
- ii. The coach returns to 6U/8U for the fifth consecutive season and the level is now expired.

Coaches at the 6U/8U must take the 6U/8U refresher education every five years if they are continuing to coach at 6U/8U classification or LTS/LTP.

Coaches in 6U/8U should not take Level 1 until they start coaching at the 10U classification and above level.

As of the 2025-26 season, Level 1 coaches must continue their education with a coaching clinic each year until such time as they are coaching any older age level of hockey.

A coach may attend only one certification clinic per year. This does not include continuing education clinics or modules. The 6U/8U clinic can be taken by coaches that continuing education credit.

**(b)** In addition to the training in paragraph (a) above, coaches must also complete online age-specific training modules specific to the level of play they are coaching, that module. This requirement applies to all coaches at all levels, 6U/8U through 5. Coaches may complete more than one age-specific module in any given season. A must complete the Foundations for Player Development and the age-specific modules PRIOR to participating with a team.

**(c)** Effective in the 2022-23 season, Level 4 coaching certifications are valid for three (3) seasons, and Level 5 coaching certifications are valid for four (4) seasons, e date.

#### **(d) Grandfather Clause**

For those coaches who received Level 4 or Level 5 PRIOR TO January 1, 2021, and who are coaching or begin to coach after this date, any Tier I or Tier II teams, will education as required in (c) above.

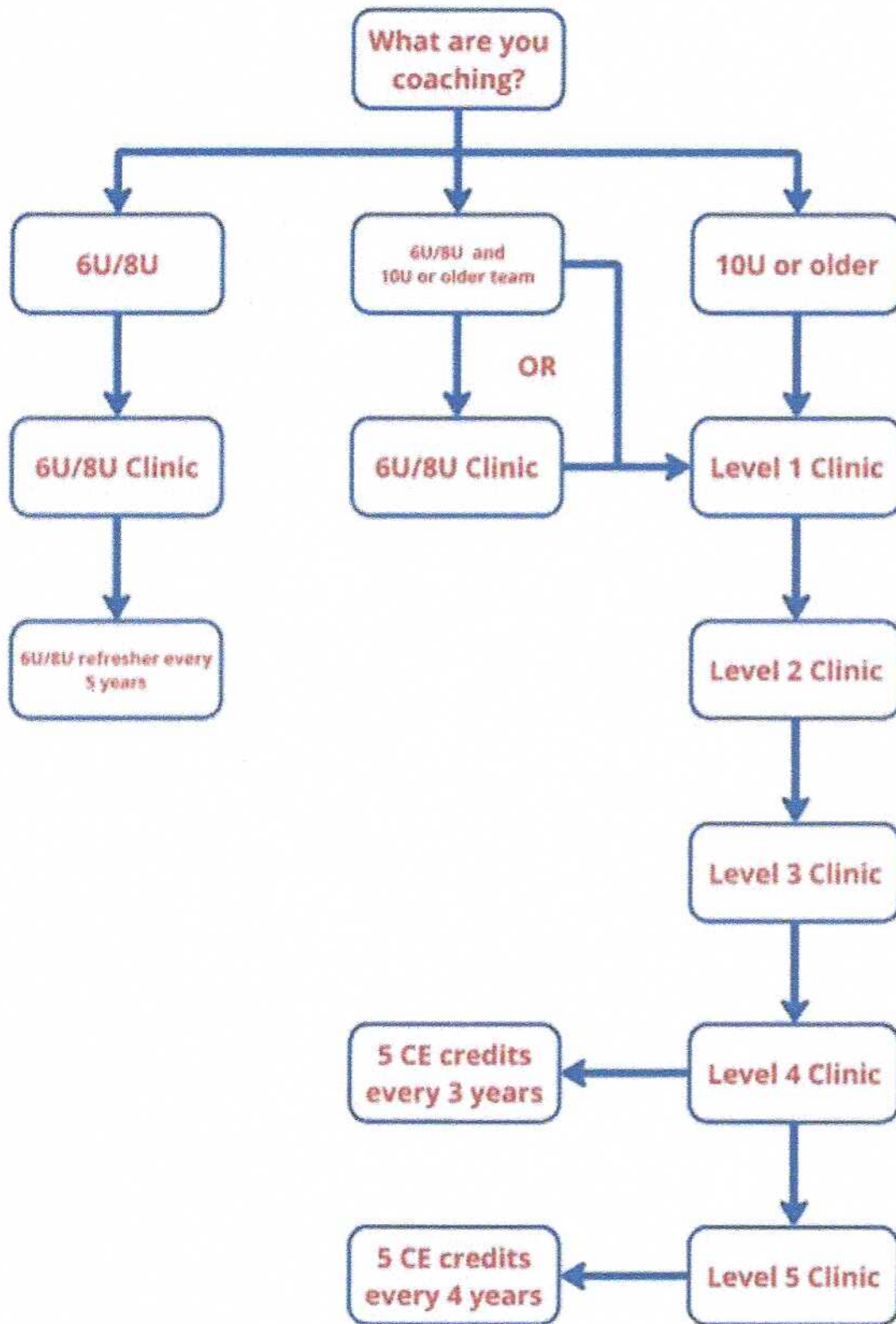
Coaches who received a Level 1, 2, 3, 4, or 5 PRIOR to January 1, 2025 and who are coaching after this date, may coach at the 6U/8U classification or LTS/LTP classification expired.

If a 6U/8U coach takes a higher level of education after January 1, 2025 they are no longer grandfathered in at the 6U/8U level and must remain current in education they are coaching.

#### **(e) Previous/Expired Certifications**

Coaches with any expired certification will retain their previous certification levels provided the certification can be verified. Coaches may re-enter the certification system subject to the certification guidelines in (a) through (c) above and/or (f) below.

### CEP Progression Guidelines



**(f) Continuing Education (CE) Accumulation and Expiration**

The USA Hockey clinic listings will indicate all continuing education offerings and the credit value of each. The Coaching Education Program retains the responsibility for values, including clinic or online course work.

Coaches that are Level 1, 2, 3, 4, or 5 may accumulate continuing education credits and will remain available for a maximum of 8 years since completed, subject to the credit hours.

Coaches at the 6U/8U Level will be able to take continuing education but will not be able to bank credit hours.

Once a Level 4 or 5 coach reaches their expiration date, all credits will be applied from their account and if they have their 5 credits of continuing education their cert

Any credits above the five needed to recertify their Level 4 or 5, the credits will be erased from their account.

## **(2) Evidence of Level**

It is the responsibility of the local association to identify those coaches who do not meet the certification requirements. All coaches have until December 31 of the current coaching clinic. All coaches must complete the online age-specific modules PRIOR to participating with their team.

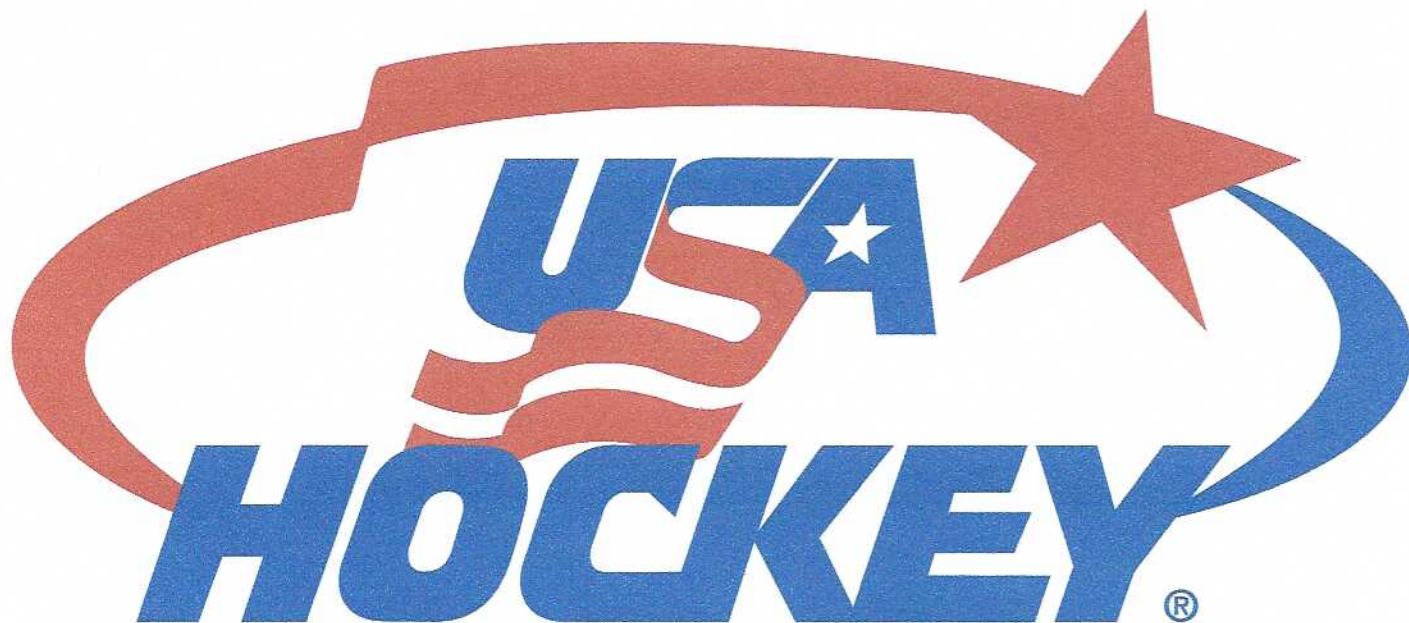
Beginning January 1 of the current season, prior to the start of each game, all coaches present are required to sign the designated area of the scoresheet in order to roster, as it appears on the scoresheet, for that game.

## **(3) Penalty and Enforcement**

Any coach not in possession of these certification requirements will be ineligible to coach for the remainder of the season. Districts and/or affiliates are required to uphold responsibility of the local association registering the team to enforce the national penalty.

- Under-Age Coaches
- Screening Policy
- Ethics Code

[Return to Top](#)



- [Parents & Players](#)
- [Coaches](#)
- [Officials](#)
- [Team USA](#)
- [Membership](#)
- [Health & Safety](#)
- [Contact](#)
- [Shop USA Hockey](#)
- [Terms of Use](#)
- [Privacy Policy](#)
- [Help](#)

**Proud Partners in Hockey**