

[View PDF Print Email](#)**PORT AUTHORITY.****Port Authority® Youth Core Soft Shell Jacket.
Y317**

A reliable soft shell at a real value. This go-to basic sheds wind and rain and is a perfect choice for corporate or team uniforming.

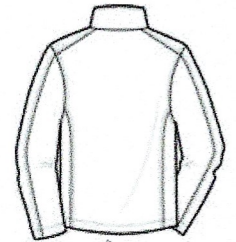
- 100% polyester woven shell bonded to a water-resistant film insert and a 100% polyester microfleece lining
- 1000MM fabric waterproof rating
- 1000G/M2 fabric breathability rating
- Wind-resistant, water-repellent and rental-friendly
- Zip-through cadet collar with chin guard
- Reverse coil zippers
- Front zippered pockets
- Open cuffs and hem

CARE INSTRUCTIONS

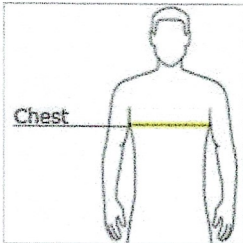
Machine wash cold with like colors. Only non-chlorine bleach when needed. Tumble dry medium. Cool iron if necessary.



front



back

HOW TO MEASURE**CHEST WIDTH**

Measure under the arm and around the fullest part of the chest with arms down, keeping tape horizontal.

SIZE CHART

	XS	S	M	L	XL
Size	4	6/8	10/12	14/16	18/20
Chest	25-26	26-28	28-30	30-32	32-35

COLOR INFORMATION

Please note: PMS code information is shown only when an exact match is available.



Battleship Grey
PMS 7540 C



Black
PMS BLACK C



Dress Blue Navy
PMS 533C

[View PDF](#) [Print](#) [Email](#)**SPORT-TEK****Sport-Tek® Youth Tricot Track Jogger. YPST95**

Designed for movement, these classic tricot track joggers have a tapered fit and easy on/off zippers.

- 100% polyester tricot
- Soft-brushed backing
- Tag-free label
- Elastic waistband
- No drawcord
- Side seam pockets
- Reverse coil extended leg zippers

CARE INSTRUCTIONS

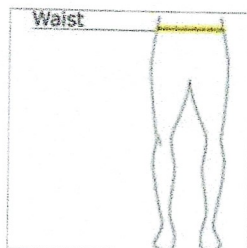
Machine wash cold. Gentle cycle with like colors. Use mild detergent, remove immediately. Do not allow to lay on itself when wet. Do not bleach. Tumble dry low. Cool iron, if needed.



front



back

HOW TO MEASURE**WAIST**

Measure around the smallest part of the natural waist.

SIZE CHART

	XS	S	M	L	XL
Size	4/5	6/8	10/12	14/16	18/20
Waist	22-23	24-25	26-27	27-28	31-32

COLOR INFORMATION

Please note: PMS code information is shown only when an exact match is available.



Black
PMS BLACK C



Graphite



True Navy
PMS 533C

[View PDF Print Email](#)**PORT AUTHORITY.****Port Authority® Core Soft Shell Jacket. J317**

A reliable soft shell at a real value. This go-to basic sheds wind and rain and is a perfect choice for corporate or team uniforming.

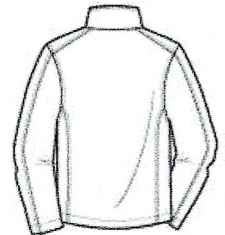
- 100% polyester woven shell bonded to a water-resistant film insert and a 100% polyester microfleece lining
- 92/8 poly/spandex woven shell bonded to a water-resistant film insert and a 100% polyester microfleece lining (Heathers)
- 1000MM fabric waterproof rating
- 1000G/M2 fabric breathability rating
- Wind-resistant, water-repellent and rental-friendly
- Zip-through cadet collar with chin guard
- Reverse coil zippers
- Front zippered pockets
- Open cuffs and hem

CARE INSTRUCTIONS

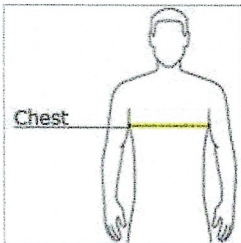
Machine wash cold with like colors. Only non-chlorine bleach when needed. Tumble dry medium. Cool iron if necessary.



front



back

HOW TO MEASURE**CHEST WIDTH**

Measure under the arm and around the fullest part of the chest with arms down, keeping tape horizontal.

SIZE CHART

	XS	S	M	L	XL	2XL	3XL	4XL	5XL	6XL
Chest	32-34	35-37	38-40	41-43	44-46	47-49	50-53	54-57	58-60	61-63

COLOR INFORMATION

Please note: PMS code information is shown only when an exact match is available.



Battleship Grey
PMS 7540 C



Black
PMS BLACK C



Black Charcoal
Heather
PMS 426C



Deep Smoke
PMS 425C



Dress Blue Navy
PMS 533C



Forest Green
PMS 553C



Maroon
PMS 504C



Navy Heather
PMS 533C



Pearl Grey Heather



Rich Red
PMS 207C



True Royal
PMS 7687C

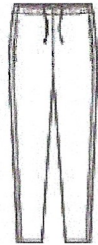
[View PDF Print Email](#)**SPORT-TEK****Sport-Tek® Tricot Track Jogger. PST95**

Designed for movement, these classic tricot track joggers have a tapered fit and easy on/off zippers.

- 100% polyester tricot
- Soft-brushed backing
- Tag-free label
- Elastic waistband with drawcord
- Side seam pockets
- Reverse coil extended leg zippers

CARE INSTRUCTIONS

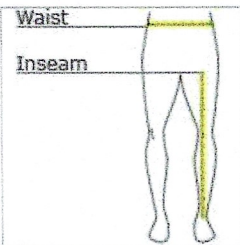
Machine wash cold. Gentle cycle with like colors. Use mild detergent, remove immediately. Do not allow to lay on itself when wet. Do not bleach. Tumble dry low. Cool iron, if needed.



front



back

HOW TO MEASURE**WAIST**

Measure around the smallest part of the natural waist.

INSEAM

Measure a similar style pant that fits well and is the desired length. Measure from the crotch seam to the hem.

SIZE CHART

	XS	S	M	L	XL	2XL	3XL	4XL
Waist	26-28	29-31	32-34	35-37	38-40	41-43	44-47	48-51

COLOR INFORMATION

Please note: PMS code information is shown only when an exact match is available.



Black
PMS BLACK C



Graphite



True Navy
PMS 533C