

South Windsor Youth Hockey Association

Tryout Policy

This Policy was developed in a sincere effort to:

- achieve the most accurate player placement
- provide players and parents transparency in the tryout process
- provide a set of standards in an effort to assure a high degree of fairness and objectivity in the tryout process

Participation

Conflicts in the ability to tryout are inevitable no matter the level of planning. The Association will use its best efforts to appropriately place players who have had conflicts with the tryout schedule. It is policy that players attend all, or as many, of their scheduled sessions as possible. Obviously, players who are on the ice have the best chance to demonstrate their ability. Board approval is required for a player to be placed on a team without having attended a single tryout session

Should a player *elect* not to participate in the tryout sessions (as opposed to missing tryouts due to different circumstances) he or she will be automatically placed on the last team of their age group, provided that there are available roster spots on that team

Personnel

- **Director of Tryouts**
 - Will run all on-ice drills
- **Evaluators** will consist of the following:
 - Head of Coaching
 - Head of Goalie Development
 - Independent evaluator(s) – someone with knowledge of our organization but does not have a child trying out this season **at that age level**
 - All named head coaches for the given level being evaluated **(number of independent evaluators will match the number of head coaches)**
 - Whenever possible, the head of the previous age level

Selection Considerations

- Every player trying out will be evaluated and considered for placement on the highest team, regardless of their placement for the prior season. **Please recognize that every player (including goaltender position) is unique and his or her development may jump ahead of or lag behind his or her peers. With this in mind, the Evaluation Team will try to acknowledge the forward progress of each skater for the next season, but in some instances, that will not be possible and a player may remain stationary or move to a lower team. Player placement is not lockstep from year to year.**

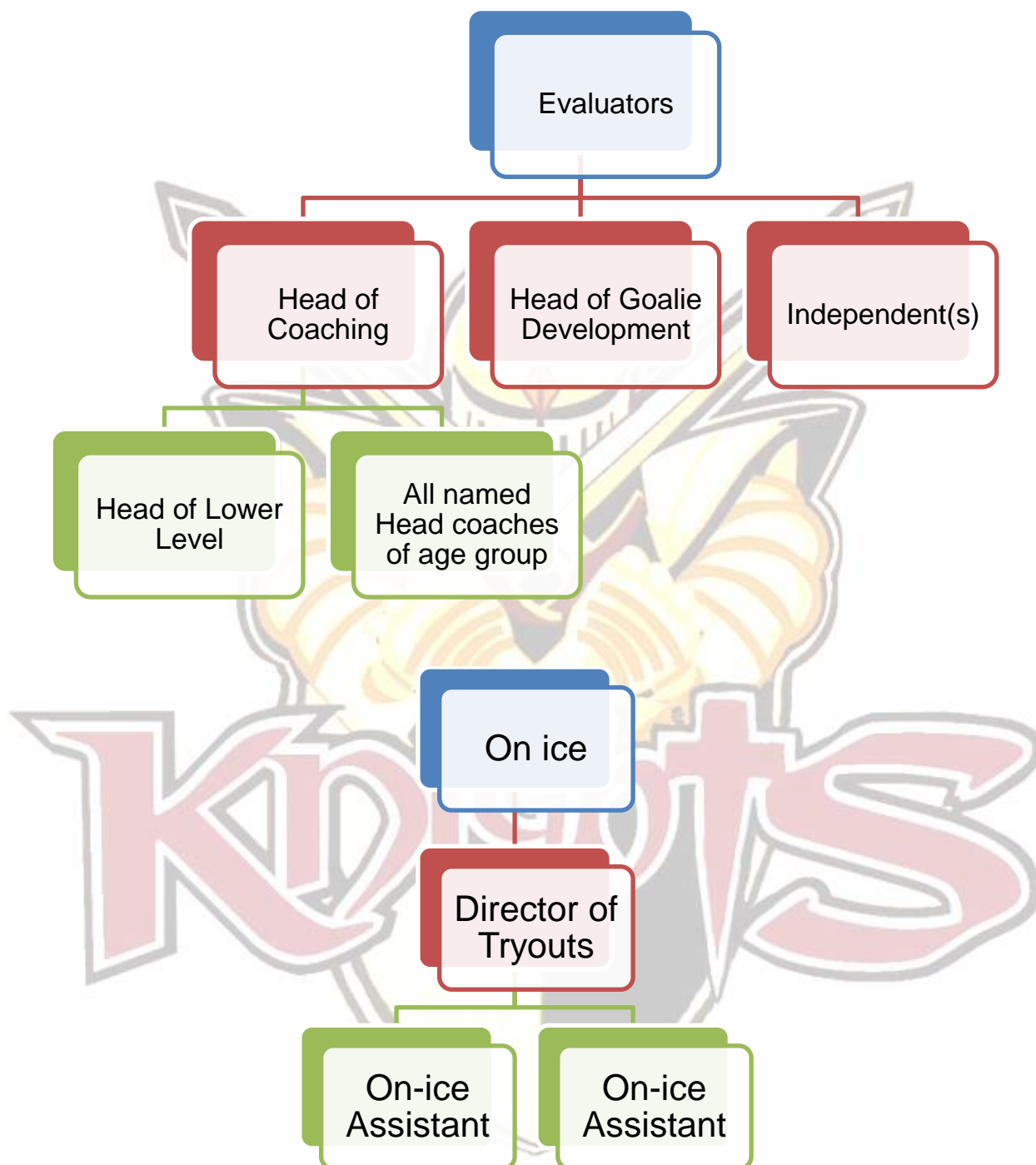
- There may be cases when **the evaluation team** decides to leave an open slot on a team upon completion of tryouts with the intention of filling said slot at some point during the coming season
- Throughout the season, the Head of Coaching, the Head Coaches of the level and the President continue to watch player development and may choose to move a player to a higher team at the age level. This includes players who attended tryouts and were placed as well as players who joined SWYHA late and missed tryouts.
- The head of the previous age level will be able provide background on incoming players as someone who has first-hand coaching knowledge of said players
- **Previous years coach's evaluations of each player will be presented to the evaluation team and these evaluations include rankings in each of the following areas: skating, stick handling, shooting, competitiveness, coachability, behavior and effort in practice.**
- **Team selection process is overseen by the president and all players will be evaluated for each team.**

Parent Guidelines

Please understand that the tryout process is imperfect and that there is a subjective element to the process. Evaluators must make difficult decisions but the Board of Directors has created what it believes to be a fair process that relies on volunteers doing the best they can. **We understand that tryouts are a very stressful time for both players and parents. Since your child will be busy working on the ice during this time, we ask you to follow a few simple rules during tryouts.**

- **Stay positive with your child at all times**
- **Stay away from the glass during tryouts. Parents and bystanders shall not stand along the glass. Please sit in the bleachers during the tryouts.**
- **Sideline coaching by the parents during the tryouts or outward yelling will not be tolerated. Your player needs to remain focused and attentive to the instructors at all times.**
- **Stay focused on the big picture and trust that our goal is to put every child into the best opportunity for them to succeed.**
- **Stay with the program and help your child have a great year**

NO TEAM SELECTION IS FINAL UNTIL CONFIRMED BY THE EXECUTIVE BOARD OF DIRECTORS



Head of Coaching and Head of Goalie Development will be considered as independent evaluators unless they have a child trying out in age group.

If an evaluator is not available, a replacement will be selected by the Executive Board of Directors.