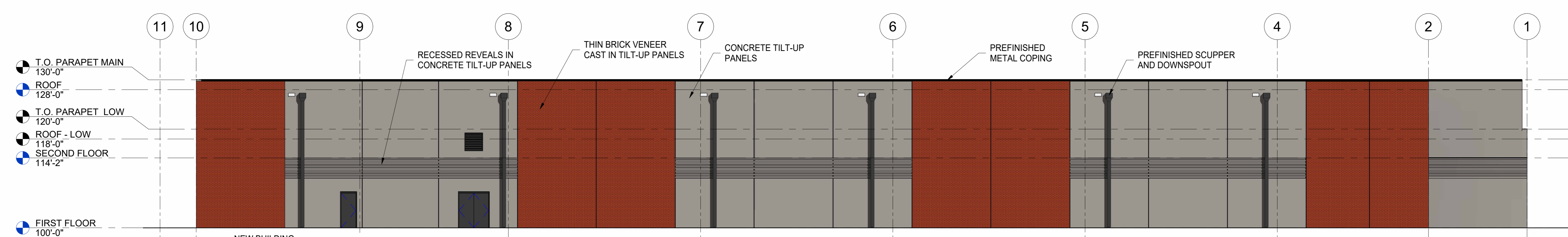
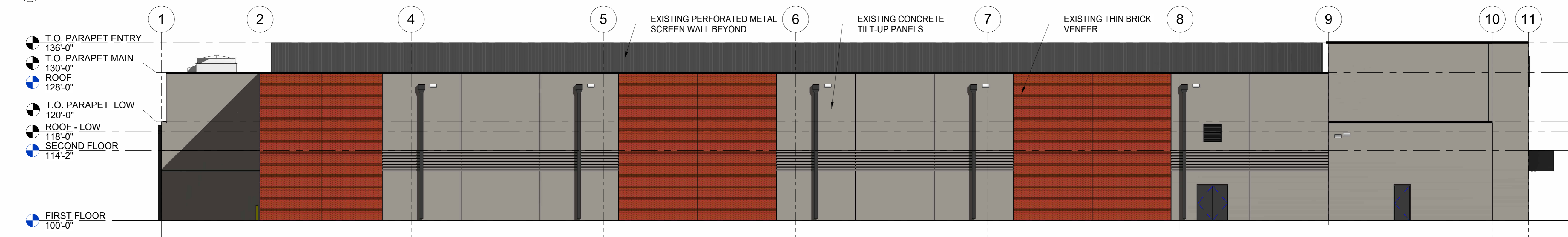


1 SIDE (NORTH) ELEVATION - MARYVILLE AMENITIES BUILDING ONLY  
3/32" = 1'-0"



2 SIDE (NORTH) ELEVATION  
3/32" = 1'-0"



3 SIDE (SOUTH) ELEVATION  
3/32" = 1'-0"

**GENERAL EXTERIOR ELEVATION NOTES**

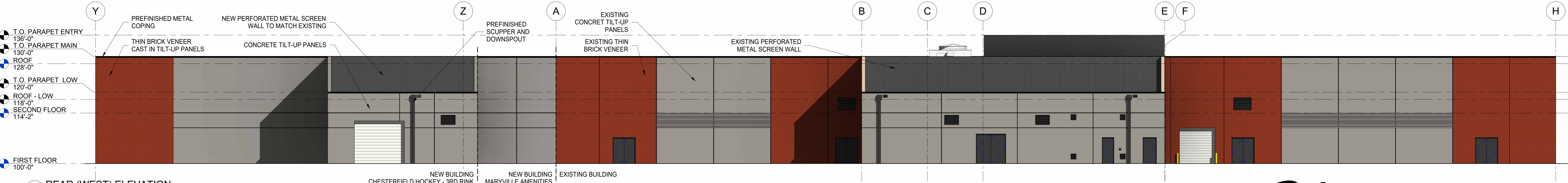
- A. COORDINATE ALL GRADES WITH CIVIL DRAWINGS. NO CONCRETE FOUNDATIONS ARE TO BE VISIBLE ABOVE FINISH GRADE. ONLY FINISH MATERIALS, S.C. TO FIELD VERIFY ALL GRADES AT BUILDING AND BRICK SHELF ELEVATION.
- B. FOR DOOR SCHEDULE AND FRAME ELEVATIONS, REFER TO A700 SERIES SHEETS.

**EXTERIOR FINISH MATERIAL LEGEND**

- CONC1 - TILT-UP CONCRETE PANELS  
PAINTED SHERWIN WILLIAMS #7018 DOVETAIL - TO MATCH EXISTING
- CONC2 - REVEALS IN TILT-UP CONCRETE PANELS  
FORMALINER REVEALS IN CONCRETE TILT-UP PANEL (RE: DETAIL AND SPEC)
- BV1 - THIN BRICK VENEER  
RUNNING BOND, 4x12 (UTILITY SIZE) BRICK VENEER CAST IN TILT-UP PANELS ENDICOTT RED IRONSPOT (UTILITY SIZE) THIN BRICK - TO MATCH EXISTING
- MP1 - METAL PANEL CANOPY  
COMPOSITE METAL PANEL SYSTEM (ACM) - BLACK ANODIZED (RE: SPEC)
- MP2 - METAL PANEL SCREEN WALL  
PERFORATED BLACK ANODIZED ALUMINUM PANEL (40% PERF)
- MP3 - PREFINISHED METAL COPING  
PREFINISHED ALUMINUM COPING SYSTEM IN BLACK ANODIZED (RE: SPEC)
- MP4 - PREFINISHED SCUPPER/DOWNSPOUT  
PREFINISHED ALUMINUM SCUPPER AND DOWNSPOUT SYSTEM IN BLACK ANODIZED ALUMINUM (RE: SPEC)
- SF1 - ALUMINUM STOREFRONT SYSTEM  
THERMALLY BROKEN ALUMINUM STOREFRONT FRAMING SYSTEM IN BLACK ANODIZED ALUMINUM (RE: FRAME ELEVATIONS AND SPEC)
- GL1 - GLAZING  
1" INSULATED GLAZING UNIT LOW-E REFLECTIVE GLASS THERMALLY BROKEN ALUMINUM STOREFRONT FRAMING SYSTEM (RE: FRAME ELEVATIONS AND SPEC)
- EIFS1 - EXTERIOR INSULATION FINISHING SYSTEM  
2" FINE TEXTURE EIFS OVER STRUCTURAL CMU WALL COLOR TO MATCH SHERWIN WILLIAMS #7018 DOVETAIL
- EIFS2 - EXTERIOR INSULATION FINISHING SYSTEM  
2" FINE TEXTURE EIFS OVER STRUCTURAL CMU WALL COLOR TO MATCH RED IRONSPOT BRICK COLOR



4 FRONT (EAST) ELEVATION  
3/32" = 1'-0"



5 REAR (WEST) ELEVATION  
3/32" = 1'-0"

**EXTERIOR ELEVATIONS**  
**MARYVILLE UNIVERSITY HOCKEY CENTER - ADDITION**  
 18383 CHESTERFIELD AIRPORT ROAD  
 CHESTERFIELD, MISSOURI

