

THE FLIGHT LOG

GFYHA
NEWSLETTER



August 2024

HIGHLIGHTS

REGISTRATION
INFORMATION

NECK GUARD
REQUIREMENT

24/25 KICKOFF
EVENT

TRYOUT DATES

TERMITE & MITES
DATES

TOURNAMENT DIRECTOR
POSITION

ADDING A GUARDIAN
IN SPORTS ENGINE

SUMMER SHOOTING &
ROLLERBLADING
CHALLENGE

EQUIPMENT EXCHANGE



INFORMATION ON
EQUIPMENT COLOR REQUIREMENTS

LOCKER ROOM MONITORS

UPCOMING CAMP OPPORTUNITIES





Hello Aviators-

We hope that you are thoroughly enjoying your summer! With hockey season around the corner, there are a few important reminders of things that may be helpful as you look ahead to your fall schedules.

- Please note the page on the newsletter concerning USA Hockey's August 1st requirement for neck protection. Please purchase your athlete's neck protection so they are ready for the start of the 2024/2025 season.
- There is a possibility of games in Canada this upcoming season for our travel age players. If you have been thinking about applying for your passport/passport card, now may be a good time to do so. More information on the travel schedules will be available soon.

Please be aware: as we build out our schedules for all of the teams in our program, specific times and dates may be subject to change. If changes are made, we will do our best to notify all those affected in a timely manner. Thanks!



Registration



INFORMATION

REGISTRATION FOR 2024-2025 SEASON OPENS:

AUGUST 4TH, 2024

2024-2025 registration fees will remain the same as they have for the past 4+ seasons. You will see a change when you register for the season allowing you to "opt in" to raffle participation or "buy out" of participation.

Termites/6U

We *will* participate in the raffle: \$75

We *will not* participate in raffle: \$275

Mites/8U

We *will* participate in the raffle: \$125

We *will not* participate in raffle: \$325

Squirt/10U

We *will* participate in the raffle: \$700

We *will not* participate in the raffle: \$900

Peewee/12U

We *will* participate in the raffle: \$750

We *will not* participate in the raffle: \$950

Bantam/14U, 15U, 19U

We *will* participate in the raffle: \$850

We *will not* participate in the raffle: \$1050

REMINDER: For travel hockey teams only- the fee for registration will increase after **September 5, 2024!** Registration fees increase by \$100 after September 5th.

If you are in need of a scholarship to help reduce your program registration fees, please visit the GFYHA website. The GFYHA Scholarship application can be found under the 'Registration' tab.

NECK GUARD REQUIREMENT FROM USA HOCKEY EFFECTIVE AUGUST 1ST, 2024

COLORADO SPRINGS, Colo. – The USA Hockey Congress today approved legislation **requiring the use of neck laceration protection for players in all age classifications, other than adults, in games and practices, as well as for on-ice officials under the age of 18, effective August 1, 2024.** For clarity, the requirement includes players in the youth, girls and junior age classifications.

USA Hockey has long recommended the use of neck laceration protection, as well as cut-resistant socks, sleeves or undergarments. The USA Hockey Board of Directors asked the organization's Safety and Protective Equipment Committee in November 2023 to begin the process of recommending potential rule changes related to neck laceration protection.





2024/2025 KICKOFF *Event*



SEPTEMBER 18, 2024
4PM-10PM @ THE ICON ARENA

PLEASE JOIN US FOR MUSIC, FOOD, AND FUN

**THIS EVENT IS OPEN TO ALL GFYHA FAMILIES, SUPPORTERS AND
SURROUNDING HOCKEY COMMUNITIES**

CASH RAFFLE

GRAND PRIZE \$10,000

RUNNER UP \$5,000

ONLY 300 TICKETS WILL BE SOLD

DOOR PRIZES INCLUDE:

WAIVED TRAVEL REGISTRATION FEES

MUST BE PRESENT TO WIN

**CONTACT THE GFYHA OFFICE TO PURCHASE YOUR CASH RAFFLE TICKET. FOR
THE CASH RAFFLE YOU NEED NOT BE PRESENT TO WIN**

TRYOUT DATES 2024-2025

BANTAM & 15U

**OCTOBER
14, 15 & 16**



PEEWEEES & 12U

**OCTOBER
21, 22 & 23**

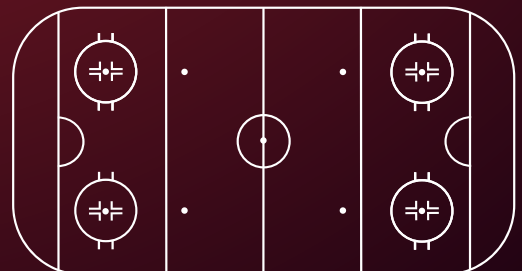
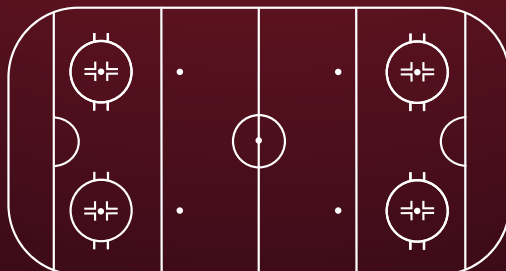
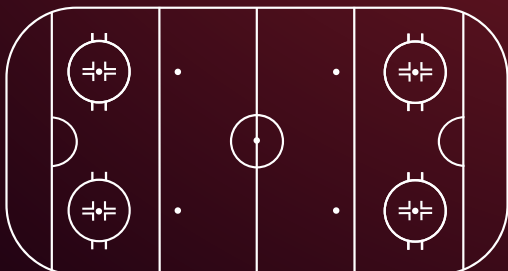
PRE-TRYOUT SCRIMMAGES



**OCTOBER
1, 3, 8 & 10**

***Pre-tryout scrimmages are not mandatory. However, players wanting to try-out for Bantam AA or Pee wee AA must attend at least one pre-tryout scrimmage.**

More details will follow!



*We Are
Hiring!*

TOURNAMENT DIRECTOR

The Tournament Director will be responsible for all Grand Forks Youth Hockey Association (GFYHA) hosted tournaments. This is a part-time (non-benefited) position, with flexible and variable hours, which will include evenings and weekends during GFYHA hosted tournaments. There is potential for this position to develop into a full-time position within the association.

For specifics on duties, responsibilities, and required skills, please visit **www.grandforksyouthhockey.com**. The job summary sheet and application can be found at the bottom of the home page and also on the 'About GFYHA' tab under the 'Employment' category.

Please send cover letter, resume, and completed GFYHA job application to directors@gfhya.com



ADDING A GUARDIAN IN SPORTS ENGINE

A common request that we receive is how to add a guardian in Sports Engine. Multiple family members can be added as guardians. Here are some step by step instructions on how to add a guardian to your Sports Engine account.

STEP 1: Sign into Sports Engine. Tap **ACCOUNT**.

STEP 2: Tap on the player profile you wish to manage beneath Household Information

STEP 3: In the lower-left corner, tap **GUARDIAN**

STEP 4: Tap **ADD GUARDIAN**

STEP 5: Enter the email address of the guardian you wish to add

- If you have multiple player profiles with this person as a guardian, tap the toggle switch to make them guardian of these profiles

STEP 6: In the upper right-hand corner, tap **SEND INVITE**

- **NOTE:** The invited guardian will appear in the Guardians tab as pending until their invitation has been accepted. You will receive an email when the guardian has accepted the invite .

EQUIPMENT **EXCHANGE**

**THE ANNUAL GFYHA
EQUIPMENT EXCHANGE IS
RIGHT AROUND THE CORNER!**

**THE EXCHANGE WILL TAKE
PLACE DURING THE TRY
HOCKEY FOR FREE EVENT
SEPTEMBER 26, 2024
AT THE ICON ARENA**



**A BOX WILL BE AVAILABLE AT
THE ICON ARENA STARTING
SEPTEMBER 2, 2024
TO BEGIN DROPPING OFF
EQUIPMENT DONATIONS**

**A REMINDER EMAIL WITH
ADDITIONAL DETAILS
WILL BE
SENT OUT AS
WE APPROACH
THESE DATES!**





SUMMER CHALLENGES

JUNE 1ST-SEPTEMBER 30TH

Players can self-track their progress for the Rollerblading Challenge. Once complete, you can email results to kmoreland@gfyha.com

Players can still sign up for the Shooting Challenge at **HOCKEYSHARE.COM**

Join the GF Aviators 2024 Team



**KEEP UP THE GREAT WORK ON OUR
SUMMER SHOOTING & ROLLERBLADING
CHALLENGES!**

**WE WOULD LOVE TO SEE PICTURES OF OUR PLAYERS WORKING HARD AT
COMPLETING THESE CHALLENGES! PLEASE EMAIL ANY PICTURES TO
[KMORELAND@GFYHA.COM](mailto:kmoreland@gfyha.com)**



INTERESTED IN COACHING DURING THE 2024/2025 HOCKEY SEASON?

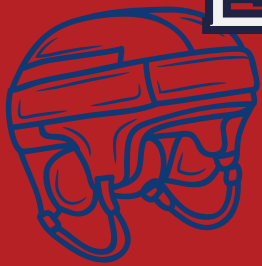
Visit www.grandforksyouthhockey.com
and under the 'More +' tab click 'Coaches'

**THIS YEAR WE ARE ASKING ANYONE INTERESTED IN
COACHING TO FILL OUT THE GFYHA 2024/2025
COACHING APPLICATION (STEP 1). WE NEED
EVERYONE TO FILL OUT THE APPLICATION, EVEN IF
YOU HAVE COACHED IN PREVIOUS SEASONS.**

You are also welcome to complete your USA Hockey
registration, background screening, and SafeSport Training
to be ready for the 24/25 season. These requirements **MUST**
be complete before you can begin coaching.



EQUIPMENT COLOR REQUIREMENT INFORMATION



This reminder is intended for clarification regarding the board's decision on the equipment color requirements for the GF Aviators. **Please note: this change will not go into effect until the 2025/2026 season.** It will only apply to all first-year squirt and 10u players during the 2025/2026 season and then continue for all new travel team aged players each successive year after that. All players older than first year squirts will be "grandfathered" in but are still encouraged to comply with the changes if buying any new equipment during their time with GFYHA. The requirements for equipment colors are as follows:

- **HELMETS: NAVY BLUE OR BLACK (NAVY BLUE IS PREFERRED)**
- **GLOVES: NAVY BLUE OR BLACK (NAVY BLUE IS PREFERRED)**
- **HOCKEY PANTS/BREEZERS: NAVY BLUE OR BLACK**

Please let us know if you have any questions!



LOCKER ROOM MONITORS

- It is the policy of USA Hockey that all USA Hockey Member Programs have at least one responsible screened adult present monitoring the locker room during all team events to assure that only participants (coaches and players), approved team personnel and family members are permitted in the locker room and to supervise the conduct in the locker room.
 - **All locker room monitors must :**
 - 1) **Register as a volunteer with USA Hockey**
 - 2) **Complete a background check**
 - 3) **Complete SafeSport Training**
- Youth players are particularly vulnerable in locker rooms, changing areas and restrooms due to various stages of dress/undress and because they are often less supervised than at other times. Athlete-to-athlete problems, such as sexual abuse, bullying, harassment or hazing, often occur when a coach or other responsible adult is not in a position to observe – this is especially true in locker rooms. Adherence to a locker room policy enhances privacy and reduces the likelihood of misconduct. Proper supervision of the locker room areas also helps ensure that players that may have suffered an injury during a game or practice have an adult present to confer with regarding such injury.
- Cell phones and other mobile devices with recording capabilities, which includes voice recording, still cameras, and video cameras, increase the risk for some forms of abuse or misconduct. As a result, **the use of a mobile device's recording capabilities in the locker rooms is not permitted at any USA Hockey sanctioned event**, provided that it may be acceptable to take photographs or recordings in a locker room in such unique circumstances as a victory celebration, team party, etc., where all persons in the locker room are appropriately dressed and have been advised that photographs or recordings are being taken.

LAMOUREUX HOCKEY & GFYHA

GIRLS HOCKEY WEEKEND



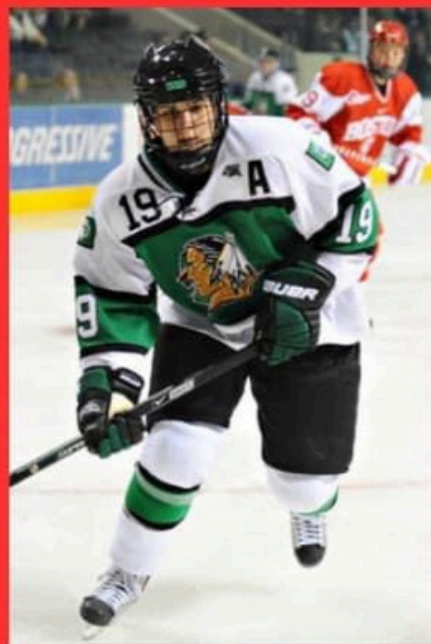
.....

SEPTEMBER 13TH-15TH
GRAND FORKS, ND

.....

HOSTED BY:

- Monique & Jocelyne Lamoureux
 - 3x olympians
 - Gold medalist, 2x silver medalist
 - University of North Dakota & Shattuck St Mary's Alumni
- Margot Miller
 - GFYHA Girls Growth and Development Director
 - 10 years of HS level coaching
 - University of North Dakota & Shattuck St Mary's Alumni



Camp includes:

- 4 on ice sessions
- 4 off ice sessions
- 4 lectures

For more details & Registration:

www.grandforksyouthhockey.com



2024 FALL SKATING, SKILLS & 3 ON 3

60 MINUTE ICE SESSIONS THAT WILL
CONSIST OF A MIX OF SKILL BASED
STATIONS AND SMALL AREA GAMES

SQUIRTS/10U-

SEPTEMBER 10, 17, & 24

MITES/8U-

SEPTEMBER 12, 19, & 26

TEEN MITES/6U-

SEPTEMBER 12, 19, & 26

**FOR MORE INFORMATION AND
REGISTRATION VISIT**

WWW.GRANDFORKSYOUTHHOCKEY.COM



TRY HOCKEY FOR FREE



COME SEE WHAT ALL THE FUN IS ABOUT!

GIRLS SESSION
5:30-6:15 PM
ICON ARENA
RYDELL CARS RINK

SEPTEMBER 26, 2024

BOYS SESSION
6:15-7:00 PM
ICON ARENA
RYDELL CARS RINK

LIMITED EQUIPMENT AVAILABLE ON A FIRST COME, FIRST SERVED BASIS
OPEN TO ALL AGES AND SURROUNDING COMMUNITIES
FOR MORE INFORMATION & REGISTRATION VISIT:
WWW.GRANDFORKSYOUTHHOCKEY.COM



GIRLS FALL SKATING & SKILLS

Group 1

Learn to Play Hockey-Ages 5-9
6U & 8U

October 6, 13, 20, 27

2:45-3:30 pm ICON Arena (Rydell)

Cost: \$20 (Includes a t-shirt)

Sponsored by S&S Transport

Group 2

10U & 12U

October 6, 13, 20

3:30-4:15 pm ICON Arena
(Rydell)

Cost: \$40

**BODY EQUIPMENT WILL BE
PROVIDED FOR NEW PLAYERS
PLAYERS NEED TO BRING
SKATES, STICKS & HELMETS**

**FOCUS WILL BE ON SKILLS AND
SMALL AREA GAMES TO
PREPARE FOR
TRYOUTS/SEASON**



GFYHA Charitable Gaming Sites

Thank you to our charitable gaming partners that support GFYHA! Please show your support to these local businesses that help our association!



**BUFFALO
WILD
WINGS®**

**BUFFALO WILD WINGS
2717 S COLUMBIA RD
GRAND FORKS, ND 58201**

**DREAMER'S LOUNGE
INSIDE THE RAMADA INN
1205 N 43RD ST
GRAND FORKS, ND 58203**



Thank you to our
SPONSORS

SCHEELS®



**BUFFALO
WILD
WINGS**



ICON
ARCHITECTURAL GROUP



Visit Greater
GRAND FORKS
grand forks, nd | east grand forks, mn

GRAND FORKS
BLUE LINE
CLUB