



# RECRUITING 101

Understanding the Recruiting Landscape





# What Has Changed?



## Recruiting Calendar

Earlier contacts, new visit periods, and dead periods.



## Transfer Portal

Increased player mobility and immediate eligibility.



## NIL at High School Level

Opportunities for athletes to monetize their name, image, and likeness.



## NIL/Revenue Sharing at Collegiate Level

Direct compensation and profit-sharing models for college athletes.



## Roster Sizes and Scholarship Distribution

Changes in limits and allocation of financial aid.

# NCAA FOOTBALL RECRUITING CALENDARS

## DIVISION I FCS (2025-26)

SB25-S6 NCAA RECRUITING CALENDAR

### Division I Football Championship Subdivision



■ SILENT PERIOD  
■ NCAA FEEDS  
■ EDUCATION PERIOD  
■ CONTACT PERIOD

**AUG 2025**

S	S	S	S	S	S	S	S
						1	5
3	4	5	6	7	8	9	
10	11	12	13	14	15	16	10
17	18	19	20	21	22	23	
24	25	26	27	28	29	30	
31							

**SEP**

S	S	S	S	S	S	S	S
	1	2	3	4	5	6	
7	8	9	10	11	12	13	
14	15	16	17	18	19	20	
21	22	23	24	25	26	27	
28	29	30					

**OCT**

S	S	S	S	S	S	S	S
			1	2	3	4	
5	6	7	8	9	10	11	
12	13	14	15	16	17	18	
19	20	21	22	23	24	25	
26	27	28	29	30	31		

**NOV**

S	S	S	S	S	S	S	S
							1
3	4	5	6	7	8	9	
10	11	12	13	14	15	16	
17	18	19	20	21	22	23	
24	25	26	27	28	29	30	
31							

**DEC**

S	S	S	S	S	S	S	S
		1	2	3	4	5	6
7	8	9	10	11	12	13	
14	15	16	17	18	19	20	
21	22	23	24	25	26	27	
28	29	30	31				

**JAN 2026**

S	S	S	S	S	S	S	S
							1
3	4	5	6	7	8	9	
10	11	12	13	14	15	16	
17	18	19	20	21	22	23	
24	25	26	27	28	29	30	
31							

**FEB**

S	S	S	S	S	S	S	S
1	2	3	4	5	6	7	
8	9	10	11	12	13	14	
15	16	17	18	19	20	21	
22	23	24	25	26	27	28	
29	30	31					

**MAR**

S	S	S	S	S	S	S	S
1	2	3	4	5	6	7	
8	9	10	11	12	13	14	
15	16	17	18	19	20	21	
22	23	24	25	26	27	28	
29	30	31					

**APR**

S	S	S	S	S	S	S	S
			1	2	3	4	
5	6	7	8	9	10	11	
12	13	14	15	16	17	18	
19	20	21	22	23	24	25	
26	27	28	29	30	31		

**MAY**

S	S	S	S	S	S	S	S
							1
3	4	5	6	7	8	9	
10	11	12	13	14	15	16	
17	18	19	20	21	22	23	
24	25	26	27	28	29	30	
31							

**JUN**

S	S	S	S	S	S	S	S
	1	2	3	4	5	6	
7	8	9	10	11	12	13	
14	15	16	17	18	19	20	
21	22	23	24	25	26	27	
28	29	30					

**JUL**

S	S	S	S	S	S	S	S
			1	2	3	4	
5	6	7	8	9	10	11	
12	13	14	15	16	17	18	
19	20	21	22	23	24	25	
26	27	28	29	30	31		

## DIVISION II (2024-25)

2024-25 NCAA RECRUITING CALENDAR

### Division II Football



■ CONTACT PERIOD  
■ NCAA HEAD PERIOD  
■ CONTACT PERIOD

**JUN 2024**

S	S	S	S	S	S	S	S
							1
2	3	4	5	6	7	8	
9	10	11	12	13	14	15	
16	17	18	19	20	21	22	
23	24	25	26	27	28	29	
30							

**JUL**

S	S	S	S	S	S	S	S
	1	2	3	4	5	6	
7	8	9	10	11	12	13	
14	15	16	17	18	19	20	
21	22	23	24	25	26	27	
28	29	30	31				

**AUG**

S	S	S	S	S	S	S	S
							1
3	4	5	6	7	8	9	
10	11	12	13	14	15	16	
17	18	19	20	21	22	23	
24	25	26	27	28	29	30	
31							

**SEP**

S	S	S	S	S	S	S	S
1	2	3	4	5	6	7	
8	9	10	11	12	13	14	
15	16	17	18	19	20	21	
22	23	24	25	26	27	28	
29	30	31					

**OCT**

S	S	S	S	S	S	S	S
			1	2	3	4	5
6	7	8	9	10	11	12	
13	14	15	16	17	18	19	
20	21	22	23	24	25	26	
27	28	29	30	31			

**NOV**

S	S	S	S	S	S	S	S
							1
3	4	5	6	7	8	9	
10	11	12	13	14	15	16	
17	18	19	20	21	22	23	
24	25	26	27	28	29	30	
31							

**DEC**

S	S	S	S	S	S	S	S
1	2	3	4	5	6	7	
8	9	10	11	12	13	14	
15	16	17	18	19	20	21	
22	23	24	25	26	27	28	
29	30	31					

**JAN 2025**

S	S	S	S	S	S	S	S
							1
3	4	5	6	7	8	9	
10	11	12	13	14	15	16	
17	18	19	20	21	22	23	
24	25	26	27	28	29	30	
31							

**FEB**

S	S	S	S	S	S	S	S
							1
3	4	5	6	7	8	9	
10	11	12	13	14	15	16	
17	18	19	20	21	22	23	
24	25	26	27	28	29	30	
31							

**MAR**

S	S	S	S	S	S	S	S
							1
3	4	5	6	7	8	9	
10	11	12	13	14	15	16	
17	18	19	20	21	22	23	
24	25	26	27	28	29	30	
31							

**APR**

S	S	S	S	S	S	S	S
							1
3	4	5	6	7	8	9	
10	11	12	13	14	15	16	
17	18	19	20	21	22	23	
24	25	26	27	28	29	30	
31							

**MAY**

S	S	S	S	S	S	S	S
							1
3	4	5	6	7	8	9	
10	11	12	13	14	15	16	
17	18	19	20	21	22	23	
24	25	26	27	28	29	30	
31							

# TRANSFER PORTAL



## Multiple Transfers Allowed

- Can play immediately



## Roster Needs

- Experience
- Depth
- “Free-Agency”



## No Portal Window For Graduate Students (Enter anytime)



## January Portal Window

# TRANSFER PORTAL: A FINAL UPDATE

## TOTAL NCAA FOOTBALL PLAYERS ENTERED



## ACTIVE PLAYERS HOPING TO SIGN



## PERCENTAGE OF PORTAL GUYS STILL LOOKING



FIND A SCHOOL. GET COACHED-UP. EARN A DEGREE. WIN SOME BALL GAMES.  
CREATE RELATIONSHIPS. CHANGE YOUR LIFE.



COLLEGE FOOTBALL  
**PLAYOFF**

## 105 roster Limit for FBS



**Unlimited  
Scholarships**  
85-105 countable



**1-year renewable  
contracts**



**Reduced or  
No Walk-Ons**



## 125 roster Limit for FCS



**Partial  
scholarships**



**Paired with  
academic aid**

**Arizona Promise Grant**

**Western Undergraduate Exchange (WUE)**

# Division II/III

## DII



**Partial Scholarships**



**36 Scholarships**

**85 Roster Limit**



**Negotiate Aid (Stacking of Athletic/Academic Aid Possible)**



**Full Rides Very Rare**

## DIII



**Non-Athletic Aid (Merit/Need)**



**Grant packages**



**Larger Classes**



**Admissions & Recruiting Separate**



**No Athletics in Aid Decisions**

**NCAA**

# NAIA/JUCO

## NAIA



**Partial Scholarships**



**24 Scholarships /  
No Roster Limit (Typical)**



**Stacking of Aid Possible  
(Athletic/Academic/Need)**



**Play for Passion & Opportunity**

## JUCO



**Athletic & Academic Aid Available**



**Scholarships Available  
(Varies by Division)**



**Focus on Development & Transfer**



**Academics & Eligibility Reset**



**Prove It Ground**

# ARIZONA PROMISE GRANT



**Tuition & Fees Guaranteed**  
for Eligible AZ Residents



**Covers Remaining Costs:** “Last-dollar” scholarship after Pell & other gift aid.



**Tuition-Free Pathway:** For qualifying low-income AZ residents at state universities.



**Stackable Aid:** Allows other aid (athletic/academic) for room, board, & books.



**Renewable:** Up to 8 semesters, subject to maintaining eligibility.

<https://www.azregents.edu/programs/arizona-promise-program>

# WESTERN UNDERGRADUATE EXCHANGE (WUE)



Tuition Savings Program



**Significant Tuition Discount**  
(Approx. 150% of In-State Rate)



**Participating Schools in Western States (WICHE Region)**



**Often Merit-Based / Academic Criteria Apply**



**Can Be Stacked with Partial Athletic Scholarships (e.g., FCS, DII)**

<https://www.wiche.edu/tuition-savings/wue/>

# OFFERS

## 2024 OFFERS



Arizona State (280) 20 HS / 23 TP



Arizona (274) 14 HS / 10 TP



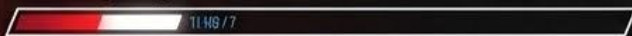
NAU (106) 14 HS / 16 TP



Stanford (134) 25 HS / 2 TP



Rice (38) 11 HS / 7 TP



Committable Offer vs Managed Offer  
Ask if offer is **committable**

**Where you stand on the board** >>>

# Sacramento State 2026 Football Offers <sup>(315)</sup>

SACRAMENTO STATE ▾

2026 ▾

OFFERS ▾

247SPORTS ▾

**(315)**

# Arizona State 2026 Football Offers <sup>(262)</sup>

ARIZONA STATE ▾

2026 ▾

OFFERS ▾

247SPORTS ▾

**(262)**

# Idaho 2026 Football Offers <sup>(45)</sup>

IDAHO ▾

2026 ▾

OFFERS ▾

247SPORTS ▾

**(45)**

***They want to be first, you need to be right!***

# ASK QUESTIONS!

- 🧠 **How many are you taking in this class/position?**
- 🧠 **What are the key traits you look for at my position?**
- 🧠 **How many have you offered at my position?**
- 🧠 **How do you plan on using me in your scheme?**
- 🧠 **How long is my offer good for? How can I earn an offer?**
- 🧠 **Where do I stand on your recruiting board?**

# BE REALISTIC



## WHAT LEVEL BEST FITS YOUR SKILL SET?

- Target correct programs
- 6 hour radius



## GRADES

- Start/Finish process
- Do NOT limit opportunity



## EXPOSURE



- Camps
- 7v7
- HS Coaching Staff
- What will coach say about you?



# X/TWITTER PROFILE

← **Michael Masunas**  
830 Tweets



⋮   ✉   🔔   **Following**

**Michael Masunas**  
@MasunasMichael Follows you

3 ⭐ / Tight End/DE 6'5" 235lbs. 4.16GPA. Hamilton C/O 2022. 530lbs deadlift, 6'11" wingspan, 4.71 40 yard. Baseball L/L 104 mph Exit Velo. 1st Team All-AZ

📍 Chandler, AZ   🔗 [hudl.com/profile/7724S91](https://hudl.com/profile/7724S91)   🕒 Born October 22  
📅 Joined July 2018

**1,054** Following   **1,263** Followers

 Followed by Mathew Travis Koloamatangi, Russell (Deuce) Davis II, and 236 others you follow

← **De'Anthony Gatson** 🏆  
1,026 Tweets



⋮   ✉   **Follow**

**De'Anthony Gatson** 🏆  
@DeeGatson7

God 1st | 5'11 205 | NHS RB 🐾

📅 Joined July 2018

**315** Following   **1,159** Followers

 Followed by Duke FB Recruiting, Tim Rattay, and 56 others you follow



## Jaxon Haynes 5'10.5 170 Slot R

Hamilton HS, Chandler AZ –GPA 3.67– 1st Team  
6a All Region, HM 6A All-State



Contact Info



2022 Varsity Highlights to Date



HUDL Profile



2021 Varsity Highlights



2020 Varsity Highlights



Transcript, Measurables, ACT



MaxPreps Varsity Stats

# YOU CONTROL THE PROCESS

# BUT IT TAKES COMMITMENT!



Coach J.R. Sandlin

@JR\_Sandlin

RECRUITS: A recruit sent me a link to a Google Drive. This Google Drive Folder had:

- Information Sheet
- Transcript
- Test Score
- JR. Highlights
- Soph. Highlights
- Workout Max Footage
- Skills & Drill Work Footage

1 Stop Shop.. BRILLIANT idea

# HOW TO BUILD YOUR HUDL HIGHLIGHTS



# HUDL

 **Best Plays First**

 **No Average Plays**

 **Keep Highlights 3 to 5 Minutes**

 **Show Variety of Traits**

 **NO SLOW MOTION / NO MUSIC**

# HUDL HIGHLIGHTS

- **PLAY SPEED**
- **PLAY STRENGTH**
- **MENTAL PROCESSING**
- **ATHLETIC ABILITY**
- **COMPETITIVE TOUGHNESS**

# HUDL HIGHLIGHTS: QB

- POCKET POISE
- EXTEND PLAYS
- TIGHT WINDOW THROWS
- TOUCH/TEMPO THROWS
- ANTICIPATION
- ACCURACY/BALL PLACEMENT
- LEADERSHIP/BODY LANGUAGE

# HUDL HIGHLIGHTS: RB

- **ATTACK THE LINE OF SCRIMMAGE**
- **ACCELERATION**
- **CHANGE OF DIRECTION / MAKE YOU MISS**
- **VISION / ABILITY TO CREATE**
- **YARDS AFTER CONTACT**
- **BALL SECURITY**
- **PASS PROTECTION**
- **RECEIVING ABILITY**

# HUDL HIGHLIGHTS: WR

- **RELEASE**
- **ACCELERATION / DECELERATION**
- **SEPARATION**
- **HANDS / CATCH RADIUS**
- **CONTESTED CATCH ABILITY**
- **AWARENESS / BODY CONTROL**
- **CHANGE OF DIRECTION / MAKE YOU MISS**
- **YARDS AFTER CATCH/CONTACT**
- **RUN BLOCKING**

# HUDL HIGHLIGHTS: OL

- GET OFF / PAD LEVEL
- LEVERAGE
- HAND PLACEMENT
- INDEPENDENT HAND USAGE
- FOOTWORK / ATHLETICISM
- BLITZ PROCESSING
- SECOND LEVEL ANGLES / COMBO BLOCKS
- MOVE THE LINE OF SCRIMMAGE
- NASTINESS / FINISH BLOCKS

# HUDL HIGHLIGHTS: DB

- MAN COVERAGE / PRESS / PEDAL
- ZONE COVERAGE / RANGE / INSTINCTS
- RECOVERY SPEED
- BALL SKILLS / BACK TO BALL
- ANGLES IN PURSUIT
- RUN SUPPORT
- TACKLING ABILITY

# HUDL HIGHLIGHTS: LB

- READ AND REACT
- EYE DISCIPLINE
- BLOCK SHED / EVADE BLOCKS
- ANGLES IN PURSUIT
- COVER IN SPACE
- TACKLING ABILITY

# HUDL HIGHLIGHTS: DL

- UPFIELD BURST
- PAD LEVEL / LEVERAGE
- USE OF HANDS
- ANKLE BEND / RUNNING THE ARC
- RESET THE LINE OF SCRIMMAGE
- STOUT VERSUS DOUBLE TEAMS
- BLOCK SHED
- EFFORT IN PURSUIT
- FINISH PLAYS

# EXPOSURE / MARKETING



## CAMPS and COMBINES

- "Exposure" Camps vs College Camps
- Where does the data go?



## WEIGHT ROOM



## OTHER SPORTS -

- RUN TRACK**
- WRESTLING**
- BASKETBALL**



## SOCIAL MEDIA - Shine Light on Program




## COACH PROSPECT LISTS / RELATIONSHIPS




Classes of 2027-2030. It's time for the best camp in Arizona. Last year we had 40 colleges in attendance and filled to capacity two weeks before camp! Make sure you register early!

[lakeforestfootballcamp.com](http://lakeforestfootballcamp.com)



 TRACKIT\_VERIFIED

 TRACKITSPTS

TRACKIT VERIFIED

THE ONLY VERIFIED COMBINE  
IN THE COUNTRY

APRIL 25<sup>TH</sup> @ PINNACLE  
HIGH SCHOOL

**OL/DL - 7:30 AM**  
**RB/LB/K/P - 10:30 AM**  
**QB/WR/TE/DB - 1:30 PM**



**VERIFIED MEASURABLES**

Your official stats and performance metrics captured on-site

**ELEVATED VISIBILITY**

Gain exposure through our nationwide recruiting network

**TRACKIT VERIFIED PROFILE**

Your fully loaded digital athletic profile- complete professional, and ready to share

**HIGH RESOLUTION FOOTAGE**

Every rep videoed in 4k for 100+ colleges on our platform to watch and evaluate

**8 FORMER NFL PLAYERS - 12 FORMER DIVISION 1 ATHLETES COACHING - EVALUATING - VERIFYING**



**ONLY \$79 UNTIL APRIL 11**

## MULTI-SPORT ATHLETES



“What I really love about it is sometimes they’re not as good in the other sports as they are in football, and so they’re willing to put their ego aside and say, ‘I know I might lose in track, but I’m going to try to make myself better as an athlete,’ Freeman said. “That speaks volumes to me.”

”

# “CHANCE FAVORS THE PREPARED MIND”

-Louis Pasteur



Do you like playing football?



Or do you like being recruited?



## RECRUITING IS A GAME



WILLING

VS



CAPABLE

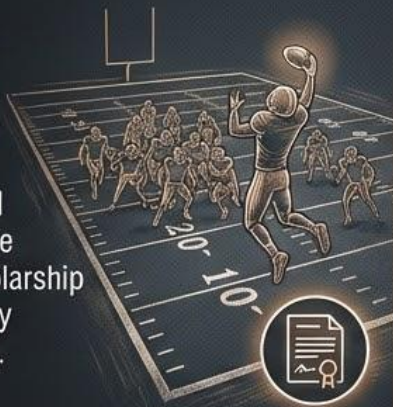
# 10-80-10 Rule



# RECRUITING BY THE NUMBERS

# 3%

of ALL HS football players will receive some sort of scholarship grant or aid to play football in college.



# 1%

of ALL HS football players will receive a Division 1 football scholarship.



# 80%

of all scholarship, grants, and financial aid money is given out at the D2/D3/NAIA and Junior College level.



# 26%

of all scholarship, grants, and financial aid recipients are no longer on scholarship in what would be their sophomore year.



**DO NOT TIE YOUR SELF-WORTH TO  
RECRUITING.**

**DO NOT COMPARE YOUR RECRUITMENT TO  
SOMEBODY ELSE.**

**-TIMING**

**-POSITION NEEDS**

**-POLITICS**

**-FAKE OFFERS**

**DO NOT BIG-TIME A COACH BECAUSE OF THE  
LOGO THEY WEAR.**

Choose the  
***PAIN of DISCIPLINE***  
over the  
***PAIN of REGRET.***

# Kyle Morgan

Cell: 480-225-2667

Twitter/X: @KyleMorgan\_XOS



---

[TWITTER: @PLAYERDATA](#)  
[INSTAGRAM: @PLAYERDATA](#)  
[FACEBOOK: @PLAYERDATA](#)  
[LINKEDIN: @PLAYERDATA](#)  
[TIKTOK: @PLAYERDATA](#)

# GET IN TOUCH!



**NEVER A DOUBT**

